

ALFA CAVGUARD ROLL

Ventilated Cavity Barrier in roll

TECHNICAL DATA SHEET



CE



www.alfaseal.pl

ALFA CAVGUARD ROLL

Ventilated Cavity Barrier in roll

PRODUCT DESCRIPTION

The **ALFA CAVGUARD ROLL** fire barrier roll is made of intumescent material which expands in the event of a fire, closing the external wall cavity and blocking the spread of fire, ensuring fire resistance up to EI60.

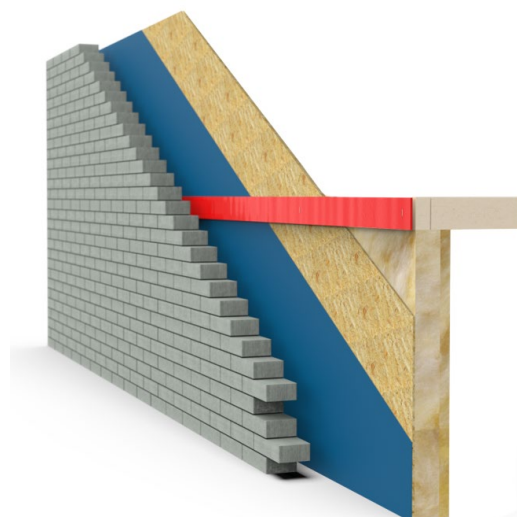
APPLICATION

ALFA CAVGUARD ROLL barriers are used to restore the fire resistance of ventilated facades (walls with an air gap inside). The following layers are permitted in the partition:

- wall structure: wooden frame, concrete, brick
- external wall cladding: brick, blocks, ice-laid stone, facing stone

The **ALFA CAVGUARD ROLL** barrier is not suitable for use with cladding made of: facade boards and other non-masonry materials.

The **ALFA CAVGUARD ROLL fire barrier** is suitable for ventilated gaps up to 65 mm wide without insulation inside the partition. The maximum air gap width after applying the fire barrier is 59 mm.



AVAILABILITY

Product	Dimensions (thickness x height x length) [mm]	Delivery form	Article number
ALFA CAVGUARD ROLL	6 x 75 x 6300	1 pcs.	860675630

TECHNICAL DATA

Color	Red
Finishing	Polyethylene cover
Cutting options	yes
Service life	60 years
Durability	Class X, the product may be exposed to weather conditions (UV, rain, frost)

COMPLIANCE

Fire resistance classification:

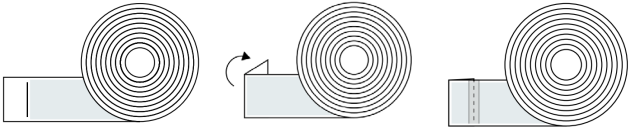
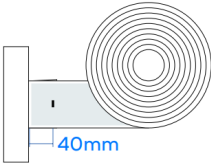
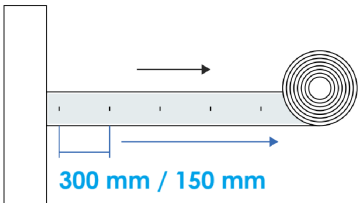

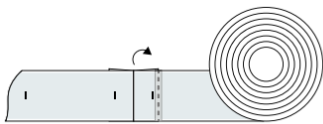
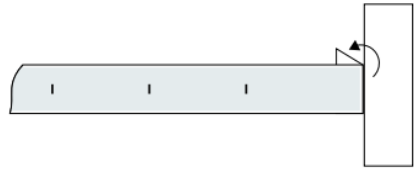
EN 1363-1

TRANSPORT AND STORAGE

Transport and store (in original, unopened packaging) in a safe, dry place.

INSTALLATION

a) PREPARATION. Clean the surface of the barrier installation area of grease, dust, and dirt. The gap barrier should be installed continuously in a straight line.

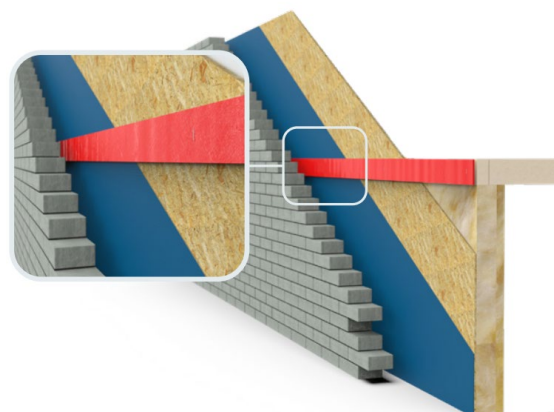
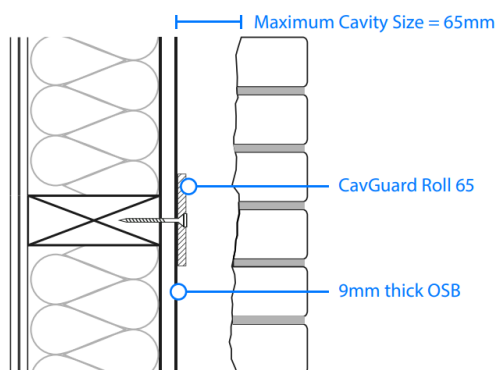
1)		Ensure that the polyethylene cover completely covers the free end of the roll. If any swelling material is visible, cut off the protruding part of the swelling material so that there is a ≥ 50 mm overlap of polyethylene behind the swelling material.
2)		After positioning the roller, make sure that the end is pressed tightly against the appropriate structural detail, and then attach the first fastener 40 mm from the start of the roller in line with the tape.
3)		Continue fastening along the axis of the belt. The spacing between fasteners depends on the type of fasteners: <ul style="list-style-type: none"> · screws/nails maximum 300 mm · staples 150 mm
4)		If the roll ends before the required total length is reached, make sure that the expanding material is not visible (as in step 1).
5)		If the roll ends before the required total length is reached, perform steps 1) and 2). Both ends of the rolls must fit tightly together. Then continue with step 3).
6)		When the end of the roll is 500 mm from the final destination point, mark the required length of the intumescent material. Cut the polyethylene cover with a 50 mm offset. Ensure that the intumescent material fits tightly to the structural detail.

FIRE CLASSIFICATION

Barrier type	Wall construction (A)	Facade cladding (B)	Type of insulation in the partition (I)	Max. slot width [mm]	Max. gap width after using the gasket [mm]	Dimensions (thickness x height x length) [mm]	Fire resistance class
ALFA CAVGUARD ROLL	Wooden frame with OSB board	Concrete	None	65	59	6 x 75 x 6300	EI 60
	Wooden frame with silicate board	Brick / wall					
	Wooden frame with plasterboard	Sloping wall / Stone					
	Wooden frame with cement particle board	Randomly arranged stone					

SOLUTION DETAILS

Typical assembly detail of ALFA CAVGUARD ROLL



Application of ALFA CAVGUARD ROLL

Not allowed to use with:

- cladding
- with facade boards



Permitted use with::

- masonry elements
- brick
- stone

