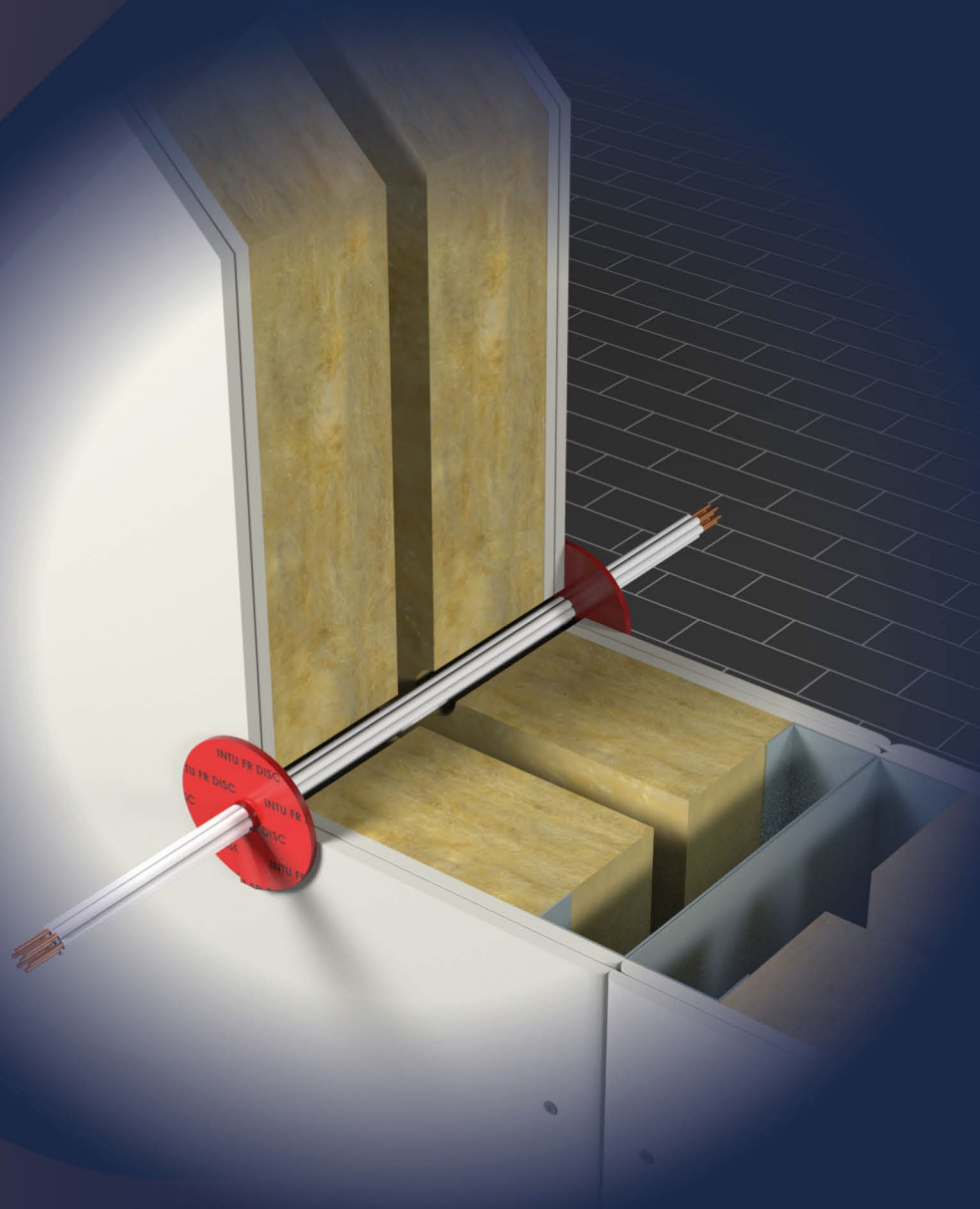


INTU FR DISC

Firestop intumescent disc

TECHNICAL DATA SHEET



INTU FR DISC

Firestop intumescent disc

PRODUCT DESCRIPTION

INTU FR DISC is a fire-resistant, self-adhesive disc with a diameter of Ø65 mm and a thickness of 3 mm, which swells under the influence of elevated temperatures, forming a fire-resistant seal around the installation and creating a barrier that ensures the partition remains tight and insulated up to EI 120.

APPLICATION

The **INTU FR DISC** fire protection disc is designed to protect cable fire passages in walls and ceilings, as well as steel pipes in walls, where the diameter of the opening does not exceed 25 mm.

Flexible wall: The wall should be at least 100 mm thick. It should be made of double-sided cladding consisting of at least two plasterboard panels.

Rigid wall: The wall should be at least 100 mm thick. It should be made of concrete or masonry elements with a density of not less than 450 kg/m³.

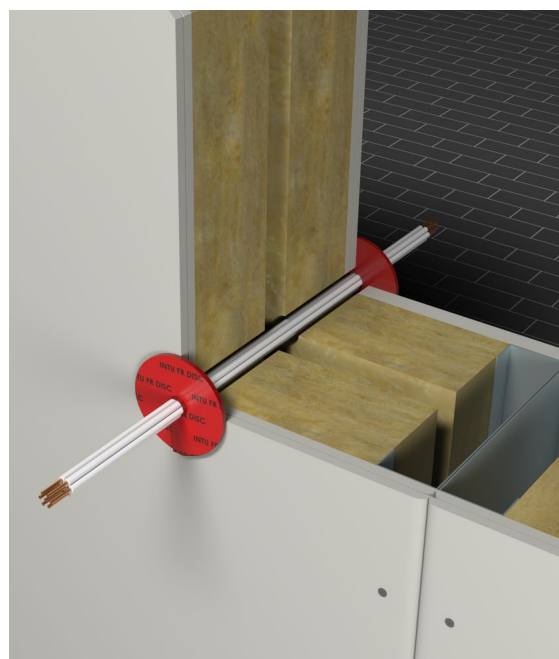
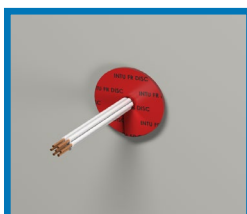
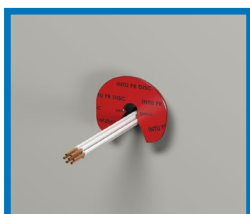
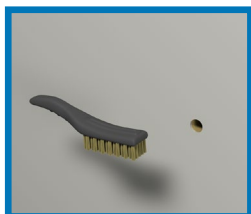
Rigid ceiling: The ceiling should be at least 150 mm thick. It should be made of concrete, reinforced concrete or aerated concrete with a density of at least 550 kg/m³.

AVAILABILITY

Product	Dimensions	Delivery form	Article number
INTU FR DISC	65 mm x 3 mm	32 pcs. in a package	3006503320

ASSEMBLY

- Before installation, clean the surface of the partition of any dirt
- Stick the intumescent disc in the installation location with a 10 mm overlap
 - wall: installation on both sides of the partition
 - ceiling: installation from the bottom of the partition– stop:



COMPLIANCE

European Technical Assessment:

ETA-24/0158

Declaration of performance:

DoP 4/2024

Certificate of constancy of performance:

1488-CPR-1110/W

TRANSPORT AND STORAGE

Transport and store in a dry and cool place at a temperature between +5°C and +35°C.

INTU FR DISC

Firestop intumescent disc

TECHNICAL DATA SHEET

FIRE CLASSIFICATION

Transition type		Diameter Ø [mm]	Fire resistance class	
			Flexible/rigid wall	Rigid ceiling
Single cable or cable harness		ØCABLE ≤ 14, ØBUNDLES ≤ 25	EI 120	EI 120
		ØCABLE ≤ 21, ØBUNDLES ≤ 25	EI 120	EI 90
Cable conduit	Steel - hollow	ØPIPES ≤ 16	EI 120	-
	PVC – empty or with type B cable	ØPIPES ≤ 25	EI 90	

SOLUTION DETAILS

		<p>Fig. 1. Cable passage in a wall</p> <p>1a – flexible wall, thickness $A \geq 100$ mm 1b – rigid wall, thickness $A \geq 100$ mm 2 – cable or cable bundle 3 – INTU FR DISC expanding disc</p> <p>Disc edge offset $a \approx 10$ mm</p> <p>Note: Discs can be installed next to each other. In this case, the distance between the holes is $b \geq 20$ mm</p>
		<p>Fig. 2. Transition of steel PIPES / steel pipe in a wall</p> <p>1a – flexible wall, thickness $A \geq 100$ mm 1b – rigid wall, thickness $A \geq 100$ mm 2 – steel pipe 3 – INTU FR DISC expanding disc</p> <p>Disc edge setting $a \approx 10$ mm</p>
		<p>Fig. 3. Cable passage in the ceiling</p> <p>1 – rigid ceiling with a thickness of $H \geq 150$ mm 2 – cable or cable bundle 3 – INTU FR DISC expanding disc</p> <p>Disk edge setting $a \approx 10$ mm</p> <p>Note: Discs can be mounted next to each other. In this case, the distance between the holes must be $b \geq 20$ mm.</p>